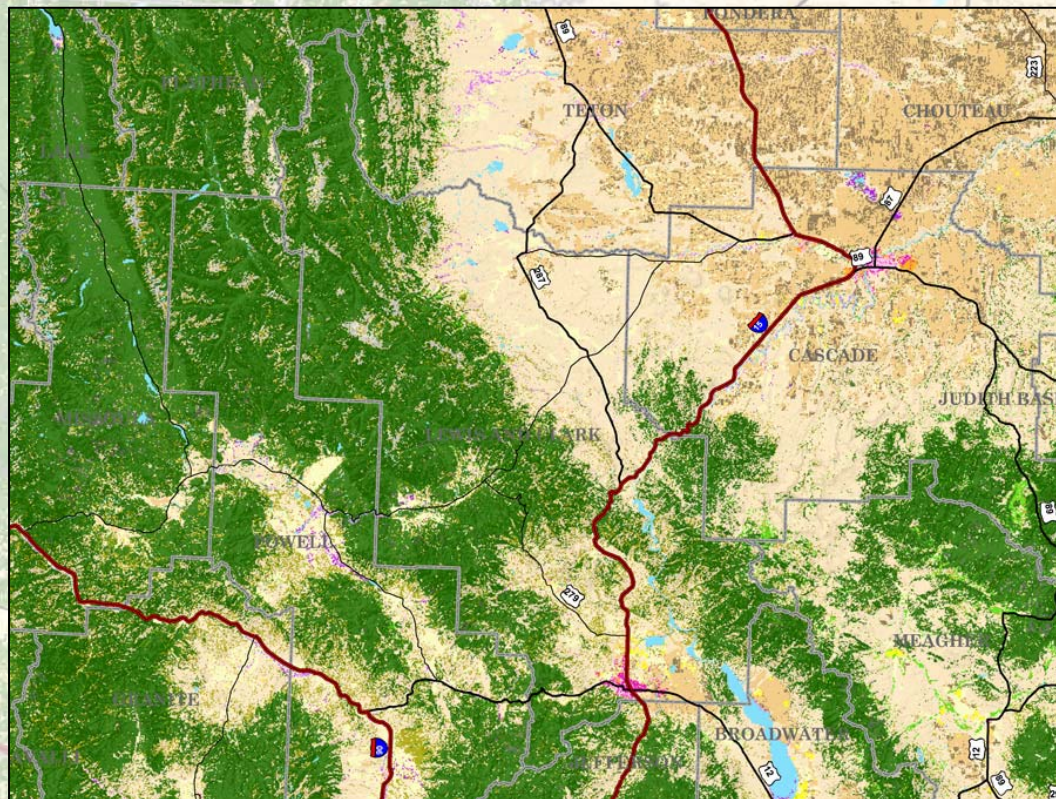


Montana Applying GeoMAPP



Diane Papineau, GIS Analyst
dpapineau@mt.gov



Montana Applying GeoMAPP

- Montana State Library is:
 - GIS Data Clearinghouse (since the late 1980s)
 - GIS Shop
 - GIS Data Archive
- Collection Development vs. Records Retention (vs. no policy!)



Montana Applying GeoMAPP

Our Documents (work in progress)

<ftp://nris.mt.gov/Public/DataArchiving/>

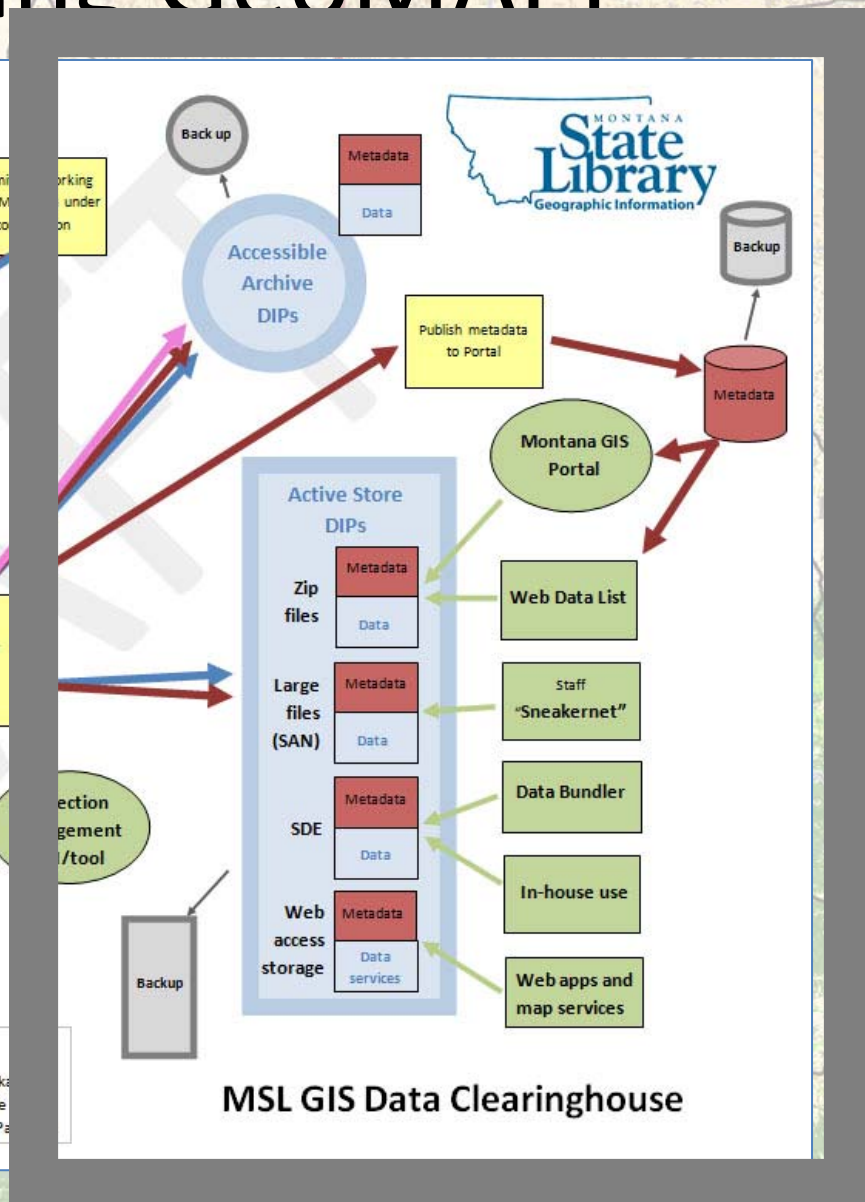
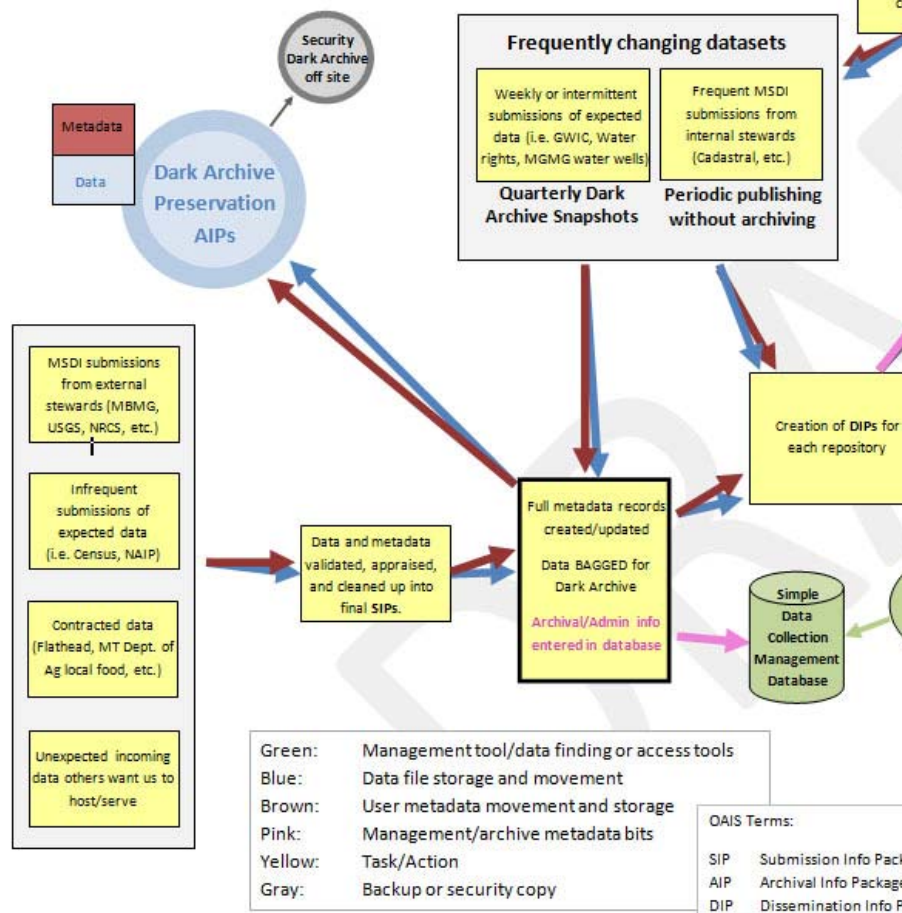
- Collection Development Policy
- Flow Diagram
- Data Transfer
 - Original GeoMAPP white paper
 - Current working draft procedure
- Terms Definitions (including OAIS “translated”)

Montana Applying GeoMAPP

Montana State Library (MSL)

Data Collection Management Process *DRAFT*

Document Status: Proposal/working draft; January 4, 2013 (author: Diane Papineau)

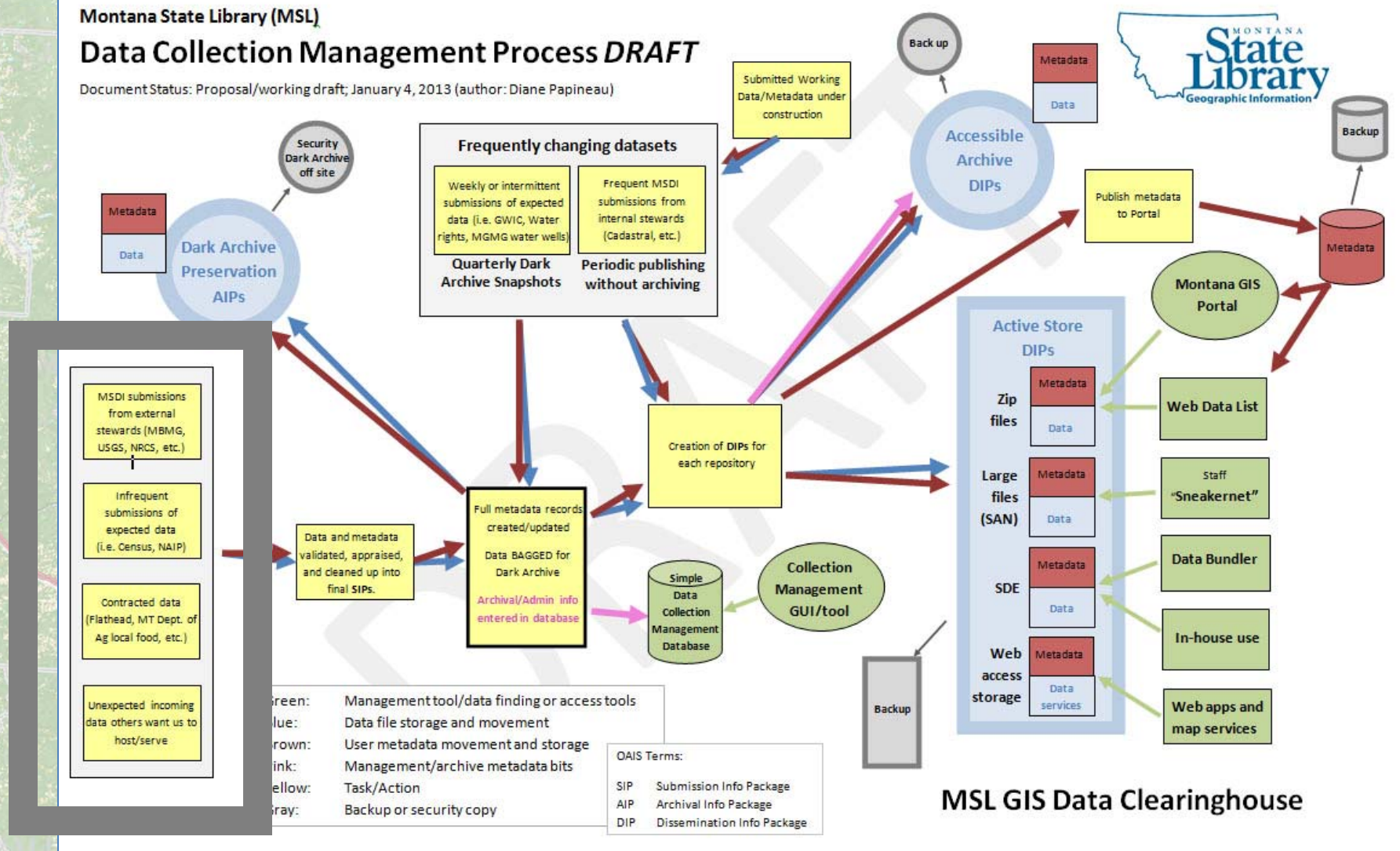


Montana Applying GeoMAPP

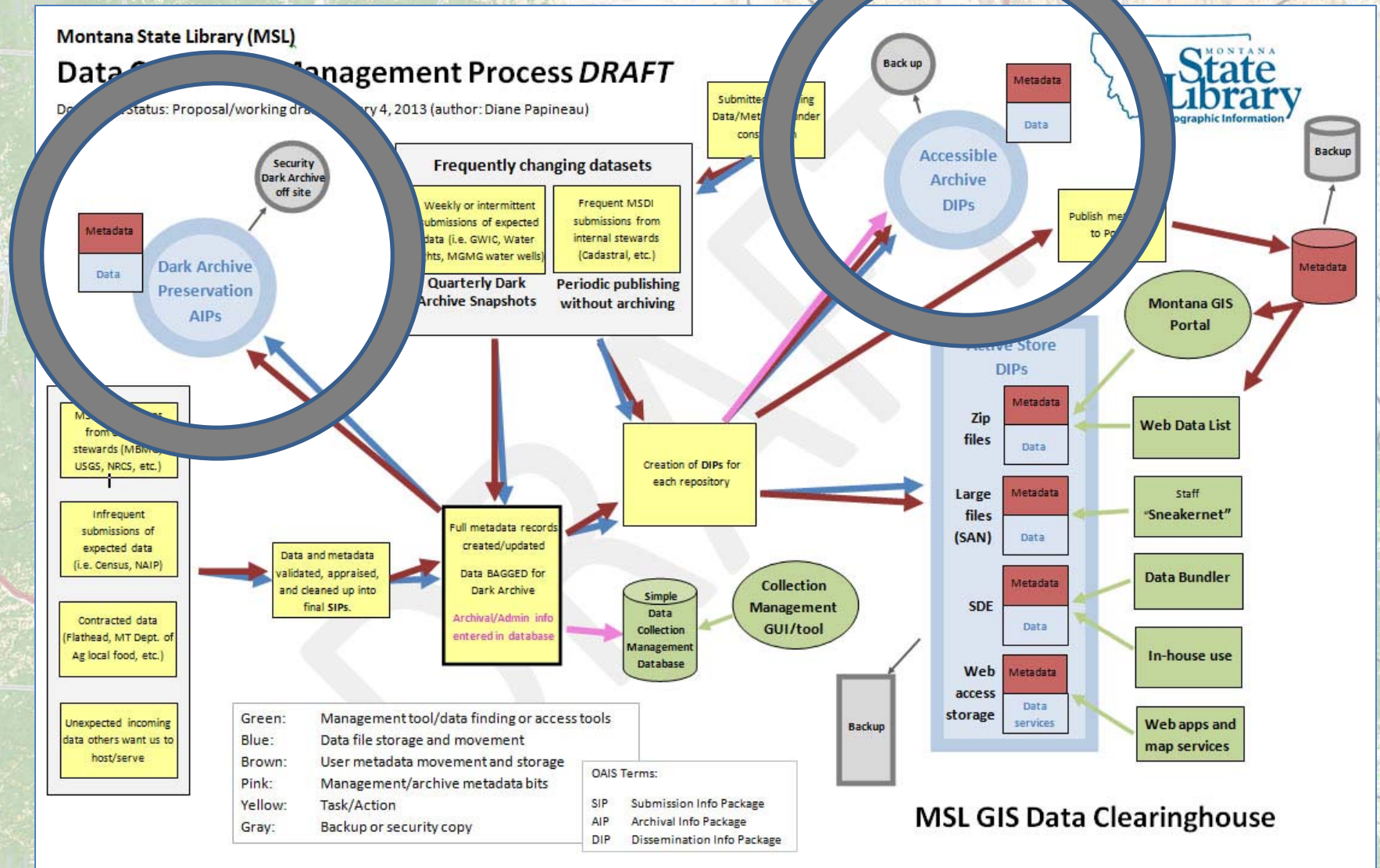
Montana State Library (MSL)

Data Collection Management Process *DRAFT*

Document Status: Proposal/working draft; January 4, 2013 (author: Diane Papineau)



Montana Applying GeoMAPP

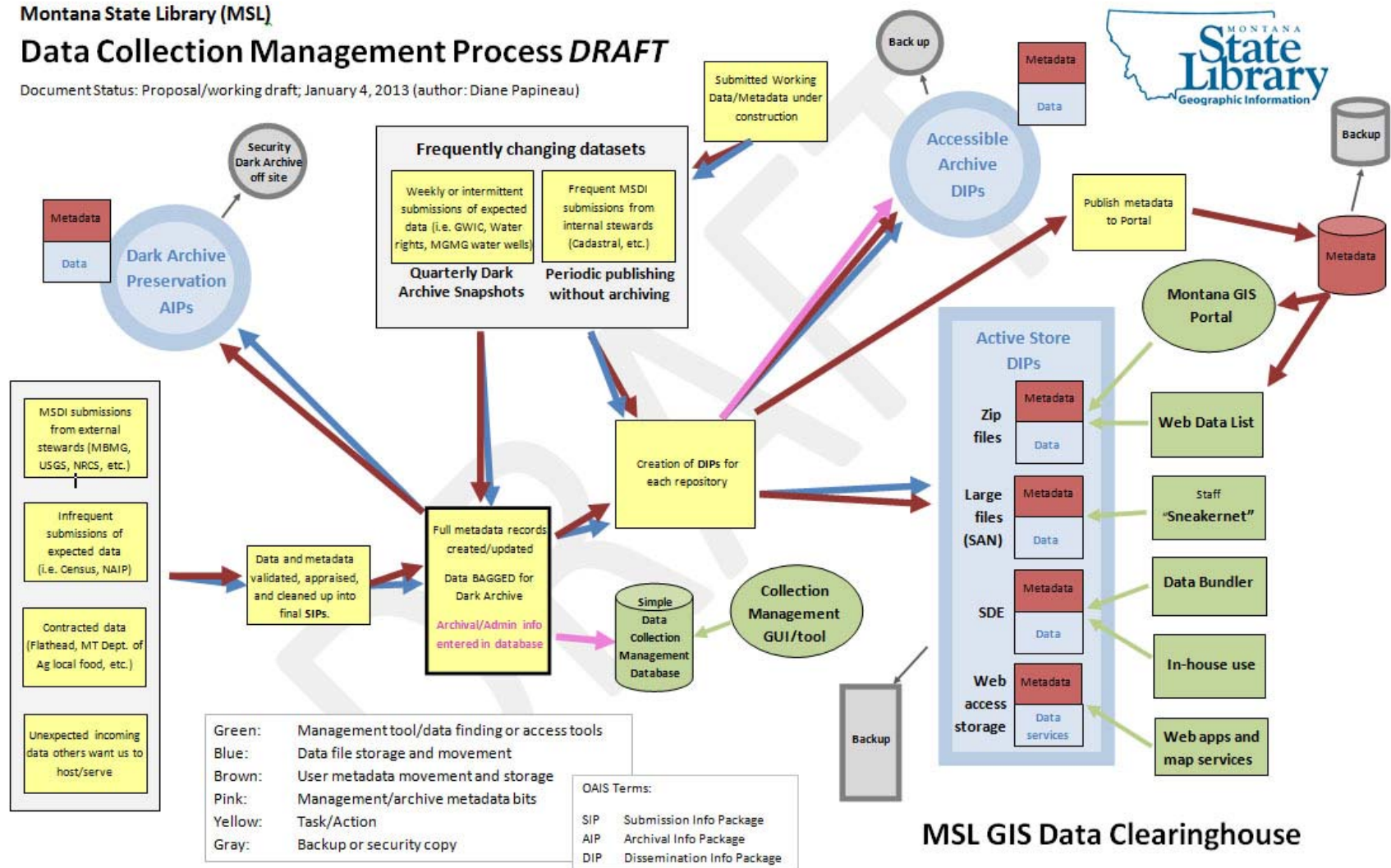


Montana Applying GeoMAPP

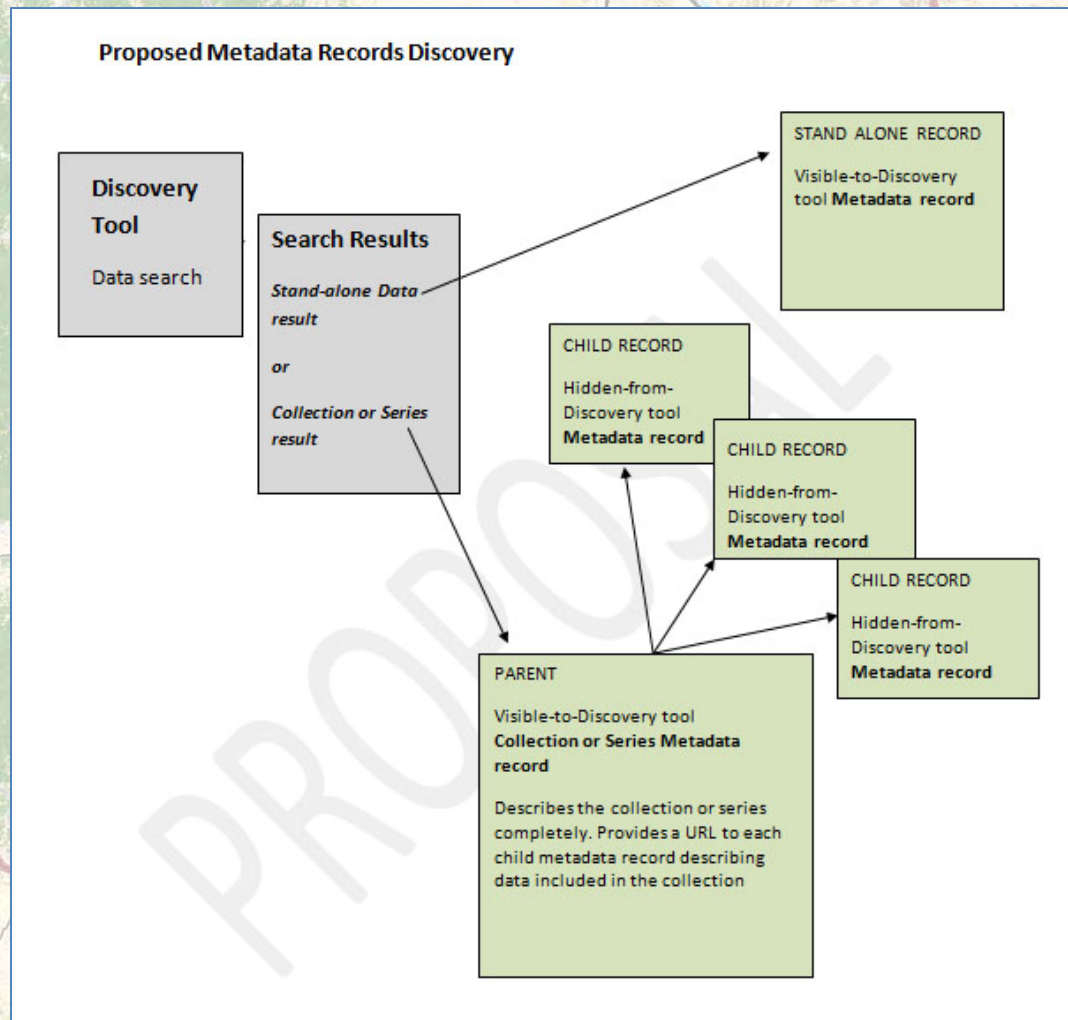
Montana State Library (MSL)

Data Collection Management Process *DRAFT*

Document Status: Proposal/working draft; January 4, 2013 (author: Diane Papineau)



Montana Applying GeoMAPP



Montana Applying GeoMAPP



Diane Papineau, GIS Analyst
dpapineau@mt.gov